

Get Closer

To Wonderful Indonesia



Danu
Toba



Borobudur



Mandalika



Labuan
Bajo



Likiepang

5 SUPER PRIORITY DESTINATION

NTT DMC

**Welcome to
East Nusa Tenggara**



**PT Flores Komodo
TOURS**



Welcome to EAST OF NUSA TENGGARA (1)

.....Great news! [Lonely Planet](#) has just ranked [East Nusa Tenggara as the Best Value Destination in the World to visit for 2020!](#) We are in number 1 after Budapest, Madhya Pradesh India, Buffalo NY, Azerbaijan, Serbia, Tunisia, Cape Winlands South Africa, Athens Greece, dan Zanzibar Tanzania.

World's most popular tourism website, [Lonely Planet](#), recently released the Best Destinations to Explore in 2015. Indonesia through the island of Flores in the province of East Nusa Tenggara, was chosen among the Top 10 Regions Best in Travel 2015, along with Macau, Rocky Mountain USA, Atacama UN Chile, and more.

.... continue

Welcome to EAST OF NUSA TENGGARA (2)

.....Flores was chosen among the world's best regions since, aside from being habitat to the giant Komodo Dragons, the region is also known as a divers paradise and is decorated with looming volcanoes and lush tropical forests. The island is recognized as offering a complete adventure for travellers. There are many places where visitors can indulge in their sheer beauty. Situated west of Flores, Labuan Bajo is a peaceful small port complemented with beautiful beaches nearby.

In 2012, [UNESCO](#) honors the village of [Wae Rebo with Asia Pacific Award](#) for its effort to preserve the architect of its traditional homes. Lonely Planet also recommended other small towns such as Bajawa which still retains well preserved traditional culture. According to Lonely Planet, a week in Flores can provide a truly fascinating experience. A trip to the Moni area and Mounth Kelimutu will offer its own memorable experience. The sunset over the three-colored Lake is definitely an unforgettable spectacle. Further to Maumere, you will discover Paga Beach which radiates a serene atmosphere.

.... continue

Welcome to EAST OF NUSA TENGGARA (3)

For the second year in a row, Indonesia's [Nihiwatu hotel in Sumba Island](#) takes title of [No. 1 hotel in the world](#) in *Travel + Leisure's* annual [World's Best](#) list (2017).

The resort, which resides on the Indonesian island of Sumba, is approximately 250 miles east of Bali, according to *Travel + Leisure*. Modeled after traditional thatched-roof homes of this small island, the hotel features native Sumbanese artwork and textiles in its private estates and villas, as well as a private pool in each room

[Sumba Island](#), located in East Nusa Tenggara (NTT) Province, has been named the most beautiful island by German Magazine, Focus (2018).

EAST NUSA TENGGARA

If you're seeking white sand, spectacular diving and surf, bubbling hot springs, majestic waterfalls and hidden traditional villages – away from Bali-esque crowds – then Nusa Tenggara is your wonderland. Spreading west from the Wallace Line dividing Asia from Australasia, this archipelago is jungle-green in the north and tending to drier savannah in the south and east. In between are limitless surf breaks and barrels, technicolor volcanic lakes, pink-sand beaches, swaggering dragons and underwater worlds filled with colour and creatures.

You'll also find a cultural diversity that's unmatched, even in multicultural Indonesia. Animist rituals and tribal traditions still thrive alongside minarets, convents and chapels, and though Bahasa Indonesia is the lingua franca, each island has at least one native language, often subdivided into dialects. From a beach-forward, tourist-ready vacation to stepping outside your comfort zone for the sort of experiences that leave an indelible mark on your memory, you're exactly where you're supposed to be.



KOMODO NATIONAL PARK

Spectacular Komodo, its steep hillsides jade in the short wet season (December to March) and frazzled by sun to a rusty tan that makes its crystal waters pop the rest of the year, is the largest island in Komodo National Park. A succession of peninsulas spread east, each providing a different perspective with some fringed in pink sand due to red coral offshore.

By Air

The two main gateways of Flores is Labuan Bajo in the west and Maumere in the east. The daily flight from [Denpasar](#) to Labuan Bajo's Komodo Airport takes around 90 minutes and to Maumere's Frans Seda Airport takes around 115 minutes.

Overland

Getting to Flores overland requires perfect planning. Public bus is available to take you across from harbor to harbor. Sea crossing is available on speedboats and local ferries, all depending on the availability.

By Sea

From Bena harbor in Bali, it takes around 36 hours voyage on the sea before you reach Labuan Bajo. For sea cruises, you should really consider your time, the season and the updated schedules at www.pelni.co.id for convenience.



FLORES ISLAND

Flores, the island given a pretty but incongruous Portuguese name by its 16th-century colonists, has become Indonesia's Next Big Thing. The serpentine, 670km Trans-Flores Hwy runs the length of the island, skirting knife-edge ridges, brushing by paddy-fringed villages and opening up dozens of areas few tourists explore.

The island is a cacophony of smells, swinging between coffee roasting in the hills, clove cigarettes, exhaust fumes and the unmistakable scent of the ocean. In the west, Labuan Bajo is a booming tourist town combining tropical beauty with nearby attractions such as Komodo National Park, superb dive spots and white-sand islands.

The east is attracting an ever-greater number of travellers chasing smouldering volcanoes, emerald rice terraces, prehistoric riddles, exotic cultures, hot springs and hidden beaches. Away from the port towns most people are nominally Catholic. Many more are part of cultures dating back centuries, living in traditional villages seemingly unchanged in millennia.

Get There

The flight from [Denpasar](#) or Labuan bajo to Flores takes about 1 hour. Meanwhile, Garuda Indonesia flies only Jakarta-Kupang (on the island of Timor) from there you can connect on local airlines to Flores.

More about Flores Island & Komodo National Park just visit

WWW.FLORES.CO.ID





SUMBA ISLAND

There's something truly enchanting about Sumba. With its rugged, undulating savannah and low limestone hills growing maize and rice, it's nothing like Indonesia's northern volcanic islands. Scattered throughout the countryside are hilltop villages with tall, symbolic grass roofs clustered around megalithic tombs, where nominally Protestant villagers still respect indigenous *marapu* (spiritual forces) with bloody sacrificial rites.

Encircling Sumba are white-sand beaches that are the stuff of dreams, as are the island's secret swimming spots and waterfalls further inland. Throw in some of Indonesia's most prized ikat (patterned textiles) and the annual [Pasola festival](#) and you have one of the most diverse islands in Indonesia where *adat* runs deep and small children with big smiles shout 'hello mister', irrespective of gender. One of Indonesia's poorest islands, an influx of investment has seen villages swap thatched roofs for tin. Traditional dress is reserved for special occasions and remote villagers expect generous donations from visitors.

Getting there

At least 2x daily flights from Denpasar, Bali to Waingapu, Sumba with Lion Air or Garuda.

More about Sumba Island just visit

WWW.SUMBATOURISM.CO.ID



www.sumbatourism.co.id

TIMOR ISLAND

Timor is an island at the southern end of Maritime Southeast Asia, north of the Timor Sea. The island is divided between the sovereign states of East Timor on the eastern part and Indonesia on the western part. The Indonesian part, also known as West Timor, constitutes part of the province of East Nusa Tenggara. Within West Timor lies an exclave of East Timor called Oecusse District. The island covers an area of 30,777 square kilometres (11,883 square miles). The name is a variant of *timur*, Malay for "east"; it is so called because it lies at the eastern end of the Lesser Sunda Islands. Mainland Australia is less than 500 km away, separated by the mentioned Timor Sea. The capital city of East of Nusa Tenggara Province is Kupang City, in Timor Island.

Getting there

Daily flights from Denpasar, Surabaya, Makassar, Jakarta with Lion/Batik Air, Garuda, Citylink. Sriwijaya/NAM Air, ect.



ALOR ISLAND

The final link of the Lesser Sunda Islands – the chain stretching east of Java – is wild, volcanic and drop-dead gorgeous. There are crumbling red-clay roads, jagged peaks, white-sand beaches and crystal-clear bays offering remarkable diving.

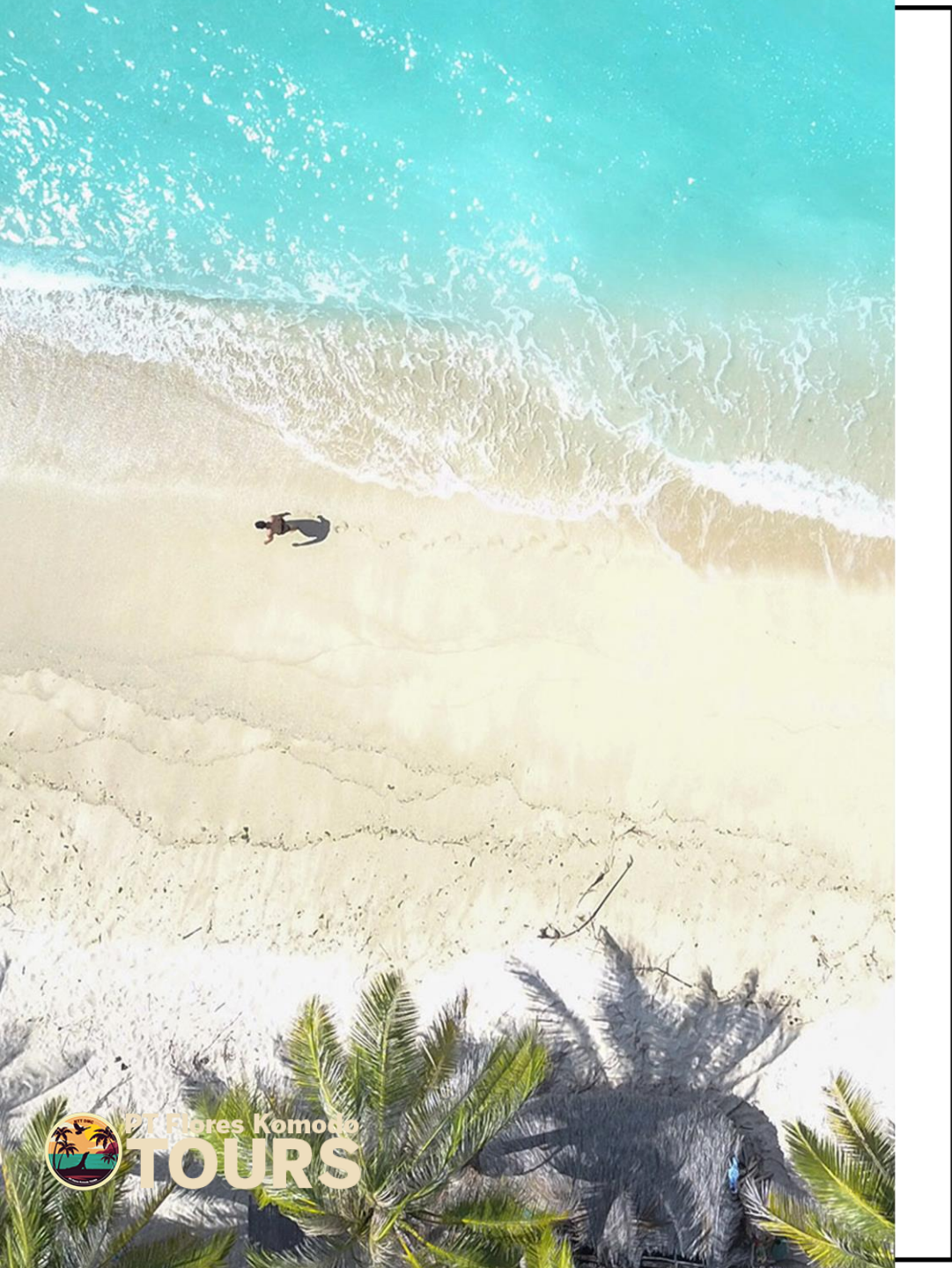
Isolated from the outside world and one another by rugged terrain, the 212,000 inhabitants of this tiny archipelago are divided into 134 tribes speaking 18 languages and 52 dialects. Although the Dutch installed local rajas along the coastal regions after 1908, they had little influence, with people still taking heads into the 1950s. These days animist traditions have been mostly replaced by Muslim and Christian ones. In more populated areas mosques dot the coast beside eye-catching, pastel-tiled graves.

Though a network of simple roads now covers Pulau Alor, boats are still a common form of transport. The few visitors who land here tend to linger on nearby Pulau Kepa or dive these waters from liveaboards.

Get There

To get to Alor, you can take a flight from Kupang, the capital of East Nusa Tenggara. From Kupang there are several airlines that serve flights to Mali Airport in Kalabahi, the main town of Alor. The other option is by ferry which will take approximately 12 hours from Kupang to Larantuka, and followed by wooden boats to Kalabahi Seaport, which takes about one hour.





ROTE ISLAND

A slender, rain-starved limestone jewel with powdery white-sand beaches and epic surf, Rote floats southwest of West Timor, but has an identity of its own. For tourists it's all about the surf, which can be gentle enough for beginners and wild enough for experts.

Ba'a, Rote's commercial centre, is a sleepy port town on the west coast where fast ferry and flights land, but people don't tend to linger. Stunning Pantai Nemberala is home to the world-renowned T-Land break, and there are dozens of hidden beaches to the south and north. To find them you'll roll through villages, over natural limestone bridges and through undulating savannah that turns from green in the December to March wet season to gold in the dry season, which is also when offshore winds fold swells into barrels. Don't overlook the tiny offshore islands where you can find gorgeous ikat, turquoise bays and more surf.

Getting There

Despite its remote location **there's** plenty to do, making it a wonderful tourist destination. But first, you have to get there! In order to get to Rote, you'll first need to fly to Kupang, Timor, from either Jakarta or Bali – from Bali the flight will take around 2 hrs

SAVU ISLAND

The Savu Islands (also spelled as Sabu or Sawu) measure 460,78 square km. and include Rai Hawu, Rai Jua and Rai Dana. The three islands are fringed by coral reef and sandy beaches. Rai Dana is a small, uninhabited island, situated thirty kilometres south-west of Rai Jua.

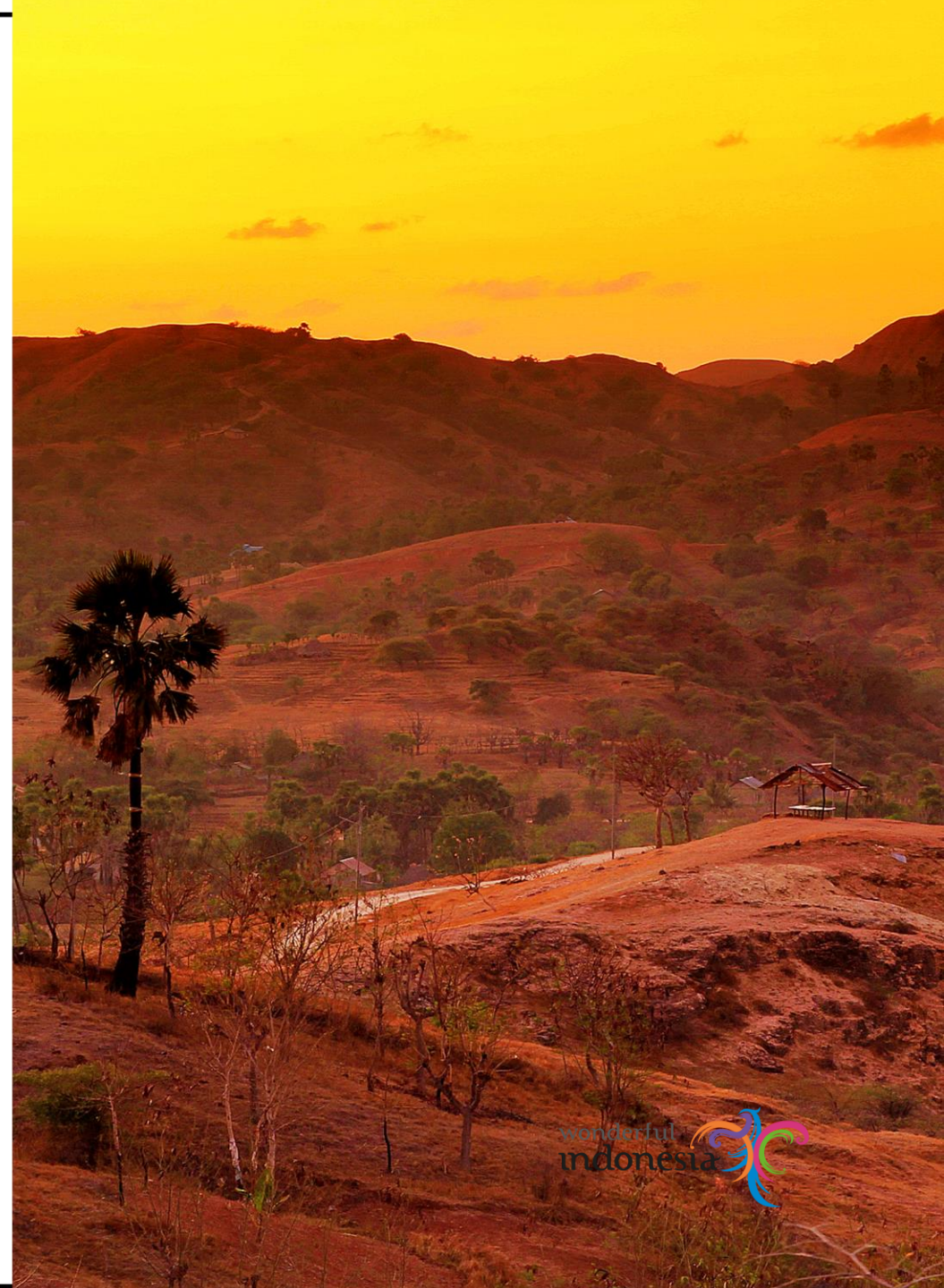
The land is for the larger part covered with grass and palms. The climate is dry for large parts of the year, due to hot winds blowing from the Australian continent.

Most rain falls during the months from November to March. Between 82% & 94% of all rain falls during the west monsoon, with little or no rain falling for the months of August to October. The mean annual rainfall for Savu Island is 1019 mm.

During the dry season, the islands' streams dry up, so the islanders depend on wells for their water supply. From April to October, deep ocean swells pound the south facing coastlines.

Getting There

Savu island can be reached within 45 minutes by plane via Kupang or Flores and by slow boat or fast ferry (Pelni, twice a week on Monday and Wednesday).





What's on in 2020 Around Nusa Tenggara?



PT Flores Komodo
TOURS



PASOLA, SUMBA ISLAND FEBRUARY - MARCH 2020

The most thrilling annual traditional war games will yet again be held on Sumba Island, East Nusa Tenggara, where the breath-taking Pasola Jousting Festivals will get underway in the upcoming month of February and March.



The exact dates when the staged battles will take place are determined by village elders at full moon rising sessions, known as "naalbukolo". Here the Ratonyale plays a most important role to declt is difficult to estimate when exactly the Pasola jousting events will be held since the fights are not only organized as ide on the dates. entertainment but are part and parcel of, and an inseparable ritual from the local belief called Marapu.



SEMANA SANTA, LARANTUKA 10 – 12 APRIL 2020

Each year on the week before Easter Sunday, the quiet little town of Larantuka in East Flores, in the East Nusa Tenggara Province comes alive with unique traditions and solemn rites celebrating the Holy Week, popularly known here as “Semana Santa”. This year the series of prayers and processions will take place from 10th to 12th April 2020.



During this special week, the small town of Larantuka will be thronged with thousands of Catholic pilgrims, coming not only from surrounding islands in Flores but also from Java, Bali, and around Indonesia, joined by many international tourists. This is because of Larantuka's unique heritage commemorating the Holy Week by blending Old Portuguese devotion with local tradition that originate from the 16th century, when in their search for spices, Portuguese merchants then occupied this island.



Semana Santa commences with Rabu Trewa or Shackled Wednesday on 10th April, of the mid-Easter week. On this day, congregations gather in chapels and pray, remembering the betrayal of Jesus by Judas Iscariot which led to the arrest of Jesus, his shackling and crucifixion. This is when the town of Larantuka turns into the Town of Mourning; a time when it drowns into solemnity and reflection for the purification of the soul.



WHAT IS NTT DMC (PT. FLORES KOMODO TOURS)

East Nusa Tenggara are known to the world as a very exotic and magnificent place providing tourists an experienced of a life time. Flores Island, Komodo National Park, Sumba Island, Timor Island, Savu Island, Rote Island, Alor Island, Lembata Island will be part of your journey with us. PT. Flores Komodo TOURS member of NTT DMC GROUP offering affordable packages starting 1 Day Trip to 12 Days 11 Nights or more base on request.

We are a legal company with a permit to conduct tourism and transporting business granted by the Indonesian Government in Sikka Regency, East Nusa Tenggara. Any package you choose will be the most comfortable trip you will ever take. Our goal is to continuously strive to exceed our client's expectations, provide enjoyable and quality tour throughout East Nusa Tenggara that while respecting the environment and local culture. We are members of ASITA INDONESIA (INDONESIAN TRAVEL COMPANY ASSOCIATION) & HPI (INDONESIAN TOUR GUIDE ASSOCIATION).



... continue





130

Tours Packages

We offering affordable packages starting 1 Day Trip to 12D/11N with various activities with more then 130 various program.

500

Happy Customers

PT. Flores Komodo Tours is a trusted tour provider, we have trusted more than 500 customers

50

Dedicated Team

More than 50 dedicate teams

5000

Subscribers

We have more than 5000 subscribers

5

Project

We have more than 5 big dream project for Nusa Tenggara

5

Branch Office

We have 5 branch office: Jakarta, Bali, Maumere, Labuan Bajo & Kupang



www.b2b-ntt-dmc.com



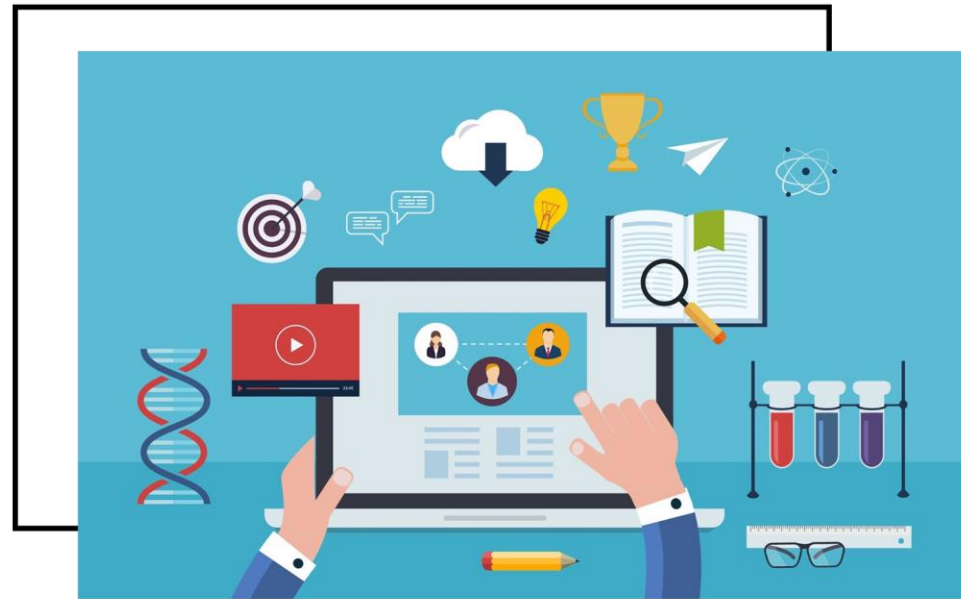
www.ntt-dmc.com



www.flores-komodotours.com

NTT DMC SYSTEM

- We are the only DMC (Destination Management Company) that focuses on developing and focusing on promoting potential areas in NTT
- We provide an online reservation system for the convenience of services directly connected to the Payment System, so that the payment can be done directly with various options including: Bank Transfer, Credit/Debit card, PayPal and merchants that cooperate with us such as Indomaret and Alfamart.
- Our company focuses 90% on B2B program and the remaining 10% direct B2C

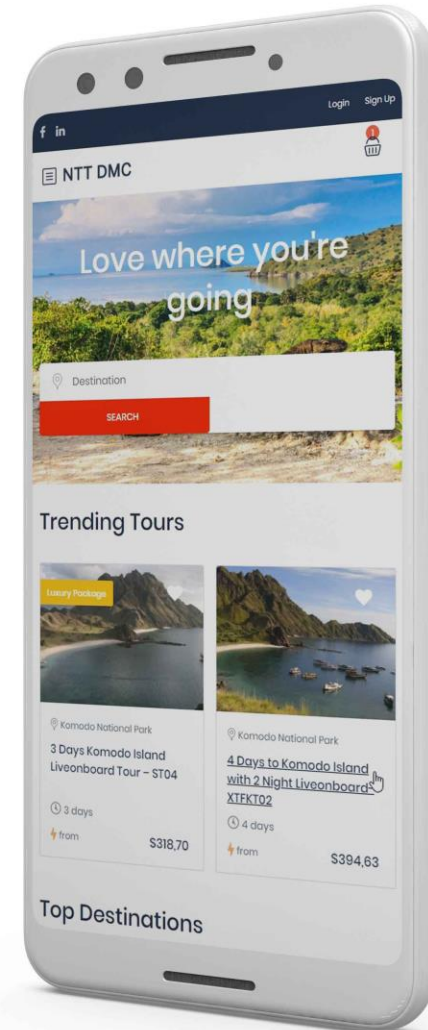


Let's NTT DMC take you there

Download the NTT DMC App
to get best tour and activity deals!



COMING
SOON



More about our packages tour to explore East of
Nusa Tenggara & Indonesia just visit

WWW.NTT-DMC.COM FOR DIRECT CUSTOMER

WWW.B2B.NTT-DMC.COM ONLY FOR TRAVEL PARTNER COMPANY



IMPORTANT LINK TO ACCESS & FIND OUR AGENT RATE & DOCUMENTATION (PHOTOS & VIDEOS):

Link to AGENT PARTNER ACCESS:

<https://drive.google.com/drive/u/1/folders/1bJoG3Im3Y1q5KhBLOsXzJKsrsBVqDVIj>

Link to STANDARD PROGRAM: <https://drive.google.com/drive/u/1/folders/1G-QLm2HI0qIkIOYetTJYIZByroMqpsp>

Link to LUXURY PROGRAM:

<https://drive.google.com/drive/u/1/folders/1mok3C6h0AV3gExtu-IL-rglbWr6BCZv0>

Link to PICTURES OF DESTINATION & BOAT:

https://drive.google.com/drive/u/1/folders/1IZMI9dhdWT75_DvHMCdTaUeCxFaAww3U

Link to VIDEO OF DESTINATION, HOTEL & BOAT:

https://drive.google.com/drive/u/1/folders/1ZLu2lyuXy3h_DvC3tvjH7wDCrc9mTRd6

Link to CATALOG BOOK:

https://drive.google.com/drive/u/1/folders/1IHK8jMeztIB_hVVrvMKIsjXs8qVvBch6

OUR PROJECT (1)

2016 - current

INTERNATIONAL PROMOTION, JOIN WITH THE MINISTRY OF TOURISM & CREATIVE ECONOMY REPUBLIC OF INDONESIA

We will continue to introduce all the things about East Nusa Tenggara to various countries. This activity aims to introduce the beauty and variety of culture from East Nusa Tenggara to International.

This Program has been running in the last 2 years, we will continue to promote to Europe, Oceania (Australia) and Asia.

SUMBA PROJECT | 2019 - current

Sumba Island is a new destination that we are developing for our next project. Soon the island of Sumba is famous because natural beauty. This island is part of province of East Nusa Tenggara (one province with Flores Island) but has a professional Tour Guide licensed and has competence in the field.

Our personally determined to cooperate with some local Tour Operators in Sumba for us both develop some candidate Professional Tour Guide to become a professional in their field and I will start at some Vocational High School Tourism there.

Little contribution we try to make to provide the new Professional Manpower as Tour Guide there. Until now we have not found the exact number of HPI Tour Guide licensed on the Sumba Island but what we found so far in the field is a driver concurrently a Tour Guide and it is not good for service.

More details just visit www.sumbatourism.co.id





NTT DMC ROADTRIP UK & EUROPE SALES MISSION 2019 - 2020



Completed Events

Sales Mission Marseille 01. September 26th, 2019
Office du Tourisme et des Congres De Marseille 11, la Canebiere
CS 60340- 13211 Marseille Cedex.

Paris Exhibition IFTM TOP RESA October 1st - 4th, 2019.
Paris Porte de Versailles.

Please come and join us in our next event

Scandinavia Baltic Tour & WTM London

SCANDINAVIA BALTIC ROAD SHOW
· Copenhagen - KBRI, 2900, Ørehøj Alle 1, 2900 Hellerup, Denmark,
OCTOBER 28th, 2019.

· Helsinki KBRI, Kuusisaarentie 3, 00340 Helsinki, Finland.
OCTOBER 29th, 2019.

· Riga, Radisson Blu Daugava, 24, Kugu iela Street, Riga, LV-1007, Latvia.
OCTOBER 30th, 2019.

· Gothenburg, Scandic Hotel, Nils Ericsonsgatan 21, 411 03 Gothenburg, Sweden.
OCTOBER 31st, 2019.

WORLD TRAVEL MART (WTM) LONDON
· London, ExCel. 1 Western Gateway
Royal Victoria Dock London Docklands - E16 1XL.
NOVEMBER 4th-6th, 2019.



SALES MISSION 2020 EUROPE

Vakantiebeurs
15 - 19 January
Utrecht, Netherland

Fitur Madrid
22 - 26 January
Madrid, Spain

Brussels Holiday Fair
6 - 9 February
Brussels, Belgium

BIT Milano
9 - 11 February
Milan, Italy

Holiday World Praha
13 - 16 February
Prague, Czech Rep.

F.R.E.E Munich
19 - 23 February
Munich, Germany

UTAZÁS
27 Feb - 1 March
Budapest, Hungary

ITB Berlin
4 - 8 March
Berlin, Germany

Official Partners



E. info@ntt-dmc.com T. +62 361 4729335 M. +62 813 923 535 68
www.ntt-dmc.com www.flores-komodotours.com www.flores.co.id www.sumbatourism.co.id www.villaflores.co.id

OUR PROJECT (2)

VILLA PROJECT | 2019 - current

We will build a villa in a tourist destination (Riung 17 Islands and Labuan Bajo) that does not yet have good hospitality and good service standards. Then in my tourism activities I will involve the local community to participants in our daily activity, including making this villa a practice place for students around it.

Engaging the community to become operator the related tourism sector as needed. Place them not as spectators but as actors in tourism board.

More details visit www.villaflores.co.id

AROUND NTT, NTB, MOLUCASS, BORNEO, BALI PROJECT | 2019 - current

We will expand into several islands that are part of East Nusa Tenggara such as: Rote, Sabu, Alor Islands, Timor and Lembata. Where the islands have a very interesting beauty and cultural diversity. And the next will be West of Nusa Tenggara (NTB Province).

Of course not only the destination, we will continue to involve the local community to be part of the development of local tourism so that it becomes a sustainable synergy.

More details for Exotic NTB visit www.exoticntb.com



OUR PROJECT (3)

TIC WEBSITE RIUNG 17 ISLAND PROJECT | 2020

We will build special website only
for provide about Riung 17 Island

More details just visit

www.riung17islands.com

NONG FLORES ART & GIFT PROJECT | 2020

We will build special website only
for support local industry to sale
art & gift with East of Nusa
Tenggara ethnic

More details just visit

www.nongflores.com

OUR PARTNERS

Domestic & International Hotel Partners

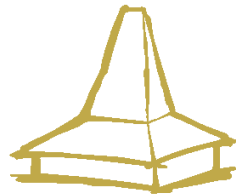
We are partnering with hotel chains across the globe to ensure a comfortable stay wherever you travel!



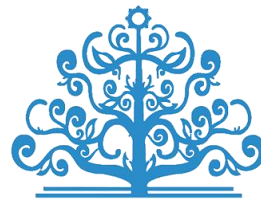
INAYA



KOMODO-FLORES
Beach Resort, Diving & Spa



LELEWATU



SUDAMALA
RESORTS



AYANA

Komodo Resort
Waecicu Beach



iDIVE
KOMODO



Anema Villa & Resort
Gili - Lombok



HOTEL
Vila Ombak
TRAWANGAN - LOMBOK - INDONESIA



PT Flores Komodo
TOURS



Kura Kura
Resort



Jambuluwuk
Oceano Resort
GILI TRAWANGAN



MARKETING STRATEGIC

Short terms

- Join promotion with Ministry of Tourism and Economy Creative Republic of Indonesia
- Email Blast
- Person to person with our marketing team (with call, meeting, ect)
- Marketing office in Bali for develop market of Australia via local agent

Long terms

- A famtrip for travel agent, consultants or government, provided by a our management as a means of promoting their service.



NTT DMC

PT Flores Komodo TOURS

Sales & Marketing Office

Perum Giri Puspa - Jl. Giri Puspa
Lestari, South Kuta, Badung
Regency, Bali

Operational Office Maumere

Jalan Nai Roa Maumere –
Larantuka, Gg Lerikson,
Watumilok, Kangae, Maumere,
East Nusa Tenggara

Operational Office Labuan Bajo

Golo Pede, Gorontalo Village,
Labuan Bajo, East Nusa Tenggara



E. info@ntt-dmc.com T. +62 361 4729335 | M. +62 813 9235 3568

www.ntt-dmc.com | www.flores.co.id | www.sumbatourism.co.id





More about our company just visit

WWW.FLORES-KOMODOTOURS.COM



TERIMA KASIH